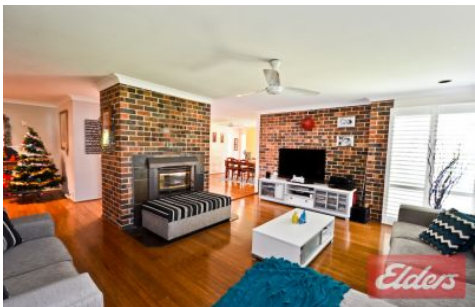


# Elders



## 64 Rosina Crescent Kings Langley NSW

3  2  2 

The locals know it as "Rosina Palms." This amazing property is perfectly positioned in the sought after Rosina crescent area and boasts superb street appeal with its beautifully manicured tropical gardens.

An absolutely perfect family home offering large open plan living seldom seen in the area, 3 large bedrooms plus study or 4th bed if you like, master with walk through robe and renovated ensuite and the features don't stop there. With the added luxury of bamboo flooring throughout, stunning plantation shutters lining each window, gourmet kitchen positioned perfectly in the centre of the home, separate lounge with fireplace which flows seamlessly through to the dining, family room and the added bonus of a massive detached rumpus perfect for a cinema room or just that space for dad, mum or the kids to enjoy away from the hustle and bustle of every day life.

**Price** : \$ 865,000  
**Land Size** : 787 sqm  
**View** : <https://www.elderskingslangley.com.au/sale/nsw/western-sydney/kings-langley/residential/house/5866741>

<https://www.elderskingslangley.com.au>



Plans are for presentation purposes only and are not part of any legal document or title. They should not be used as sole reference. Interested parties should make their own enquiries using other sources. Measurements are approximates.